

2016 FACT BOOK



Carmella Sanchez
Director of Institutional Research
505 747.2118
carmella@nmc.edu

NORTHERN New Mexico College



Northern New Mexico College is proud to present its seventh annual Fact Book publication. This document is compiled by the Office of Institutional Research. It contains profiles on student enrollment, degree offerings, financial data, and employees. The data in this publication is compiled using the most recent academic school year (fall, spring, and summer terms) and the most recent fall census report. All data is collected and maintained using Banner. The intent of this publication is to provide an accurate and consistent reference for use by various internal and external stakeholders. This effort intends to not only provide quick and easy access to institutional data but also to open-up new ideas and questions.

If you have questions or comments regarding this publication, please feel free to contact us by email at Carmella@nmmc.edu.

Thank you



NORTHERN NEW MEXICO COLLEGE

VISION

Northern New Mexico College is a Hispanic- and Native American-serving comprehensive institution that will be recognized nationally for cultural sustainability, quality student learning and developing economically strong communities among diverse populations.

MISSION

The mission of Northern New Mexico College is to ensure student success by providing access to affordable, community-based learning opportunities that meet the educational, cultural, and economic needs of the region.

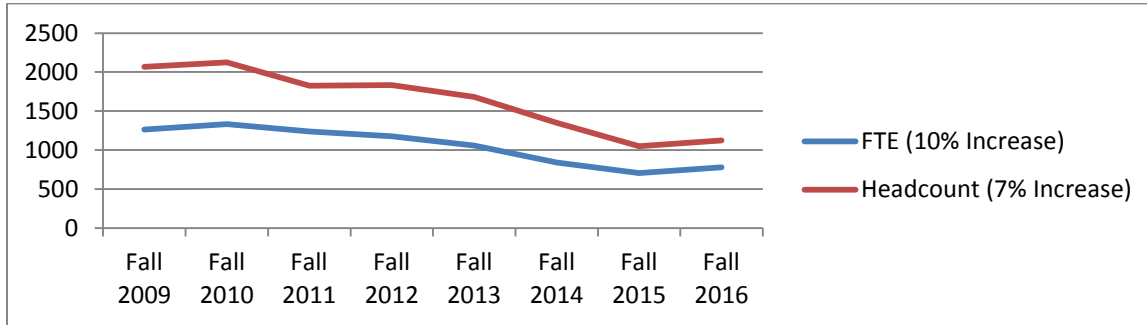
Table of Contents

<i>Student Enrollment</i>	3
<i>Employees</i>	3
<i>Budget</i>	4
<i>Community Service</i>	5
<i>Credit Enrollment</i>	6
<i>Enrollment Trends</i>	7
<i>Characteristics of Students</i>	7
<i>Residency</i>	9
<i>High School Recruitment</i>	10
<i>Degrees and Majors</i>	11

Current Facts

Student Enrollment

Source: Fall 3rd Week Enrollment Registrar’s Report



Employees

IPEDS: 2015-16 Human Resources Report (as of October 20, 2016)

	Full-Time Faculty Fall 16	Part-Time Faculty Fall 16
White	15	39
Black	0	1
Hispanic	15	26
American Indian	1	3
Asian	3	0
Non-Resident Alien	0	0
Unknown/Other	4	14
Total	38	83

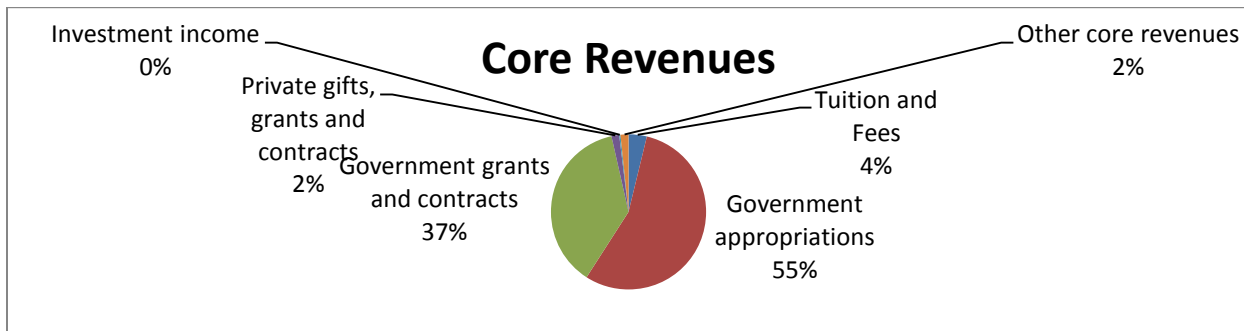
IPEDS: 2014-15 Human Resources Report (as of October 20, 2016)

	Full-Time Staff (Fall 2016)	Part-Time Staff (Fall 2016)
Administration	23	0
Staff	107	13

Budget (Source: IPEDS: 2015-16 Finance Report on Fiscal Year: July 1, 2014 - June 30, 2015)

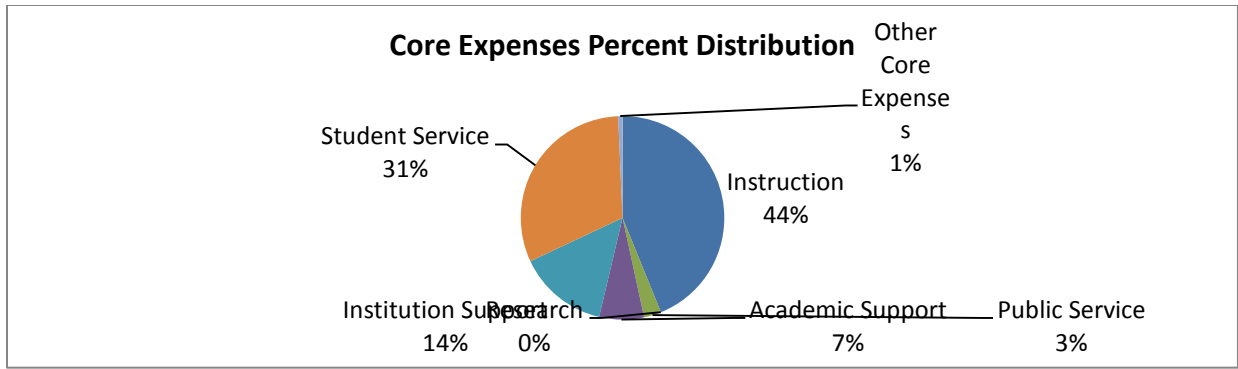
Core Revenues (to be updated 4/2017)	Total	Per FTE Enrollment
Tuition and Fees	\$795,889	\$897
State appropriations	\$11,553,079	\$13,025
Government Grants and Contracts	\$7,810,124	\$8,805
Private Gifts Grants and Contracts	\$335,993	\$379
Investment Income	\$55,790	\$63
Other Core Revenues	\$346,337	\$390

Other core revenues include federal appropriations; sales and services of educational activities; other operating and non-operating sources; and other revenues and additions (e.g., capital appropriations, capital grants and gifts, etc.). Core revenues exclude revenues from auxiliary enterprises (e.g., bookstores, dormitories), hospitals, and independent operations.



Core Expenses (to be updated 4/2017)	Total	Per FTE Enrollment
Instruction	\$8,853,405	\$8,682
Research	\$0	\$47
Public Service	\$557,508	\$480
Academic Support	\$1,432,135	\$944
Student Service	\$2,892,483	\$2,427
Institution Support	\$6,319,070	\$5,668
Other Core Expenses	\$139,867	\$947

Other core expenses include scholarships and fellowships, net of discounts and allowances, and other expenses. Core expenses exclude expenses from auxiliary enterprises (e.g., bookstores, dormitories), hospitals, and independent operations.

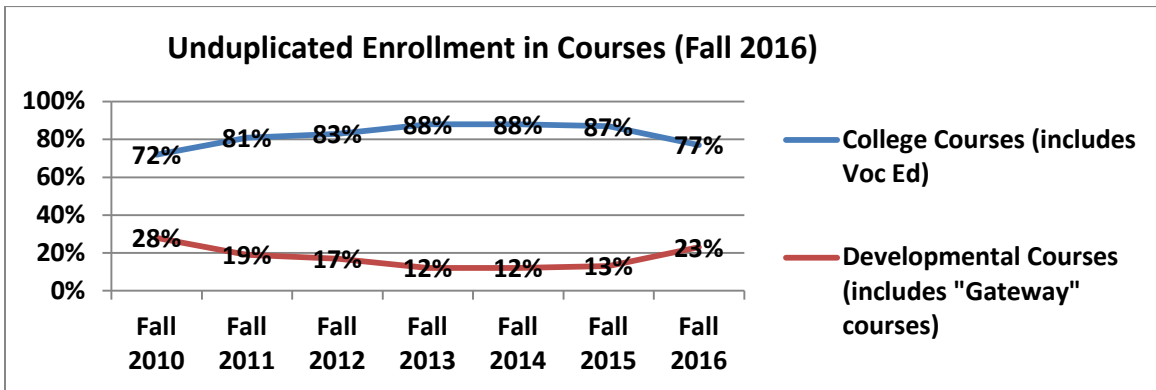


Community Service Offerings and Projects

Based on 2015-16 data, the list below provides information on community service course offerings and enrollments. There is also information on special community projects and events with numbers of participants.

Sampling of Offerings	Number of participants - unduplicated	Sampling of Special Projects for the Community
Adult Education	88	The Adult Education Program offers the opportunity for students to take and pass the High School Equivalency exam and obtain what is known as the GED®. The program also offers English as a Second Language (ESL). Overall, the program assists adults in becoming more literate and improving their educational and employability skills. The 2015-16 Adult Education Program served 88 students.
Continuing Education	802 (duplicated)	NNMC Continuing Education offers personal enrichment courses each semester. These numbers reflect CE/CS course enrollments for 2015-16. Courses include: Spanish Colonial Wood Working; Spanish Colonial Furniture Making; Weaving; Dancing; Welding; ArcView GIS; Serve Safe; Feasibility Studies; Excel; Computer Literacy; Grant Writing; How To Conduct A Feasibility Study; Strategic Planning
SBDC	3000+ (duplicated)	The NNMC SBDC is a Global, National, and Local business resource. During fiscal year 2015-16, The SBDC served 108 individual clients, conducted 20 training events to 189 attendees. The SBDC provides economic outreach presentations to the community and assists in the establishment businesses.
High School Equivalency Program (HEP)	162	The High School Equivalency Program (HEP) helps migrant and seasonal farmworkers (or children of such workers) who are 16 years of age or older and not currently enrolled in school obtain the equivalent of a high school diploma and, subsequently, to gain or upgrade employment, begin postsecondary education or training, or enlist in the military. NNMC HEP recruited 162 students and enrolled and served 80. Of the 80 enrolled, 76 received their GED®. Of the 76 that received their GED®, 40 enrolled in post-secondary education, 27 upgraded employment, 3 enrolled in training programs (police academy & CDL driving school), and 1 enlisted in the military.

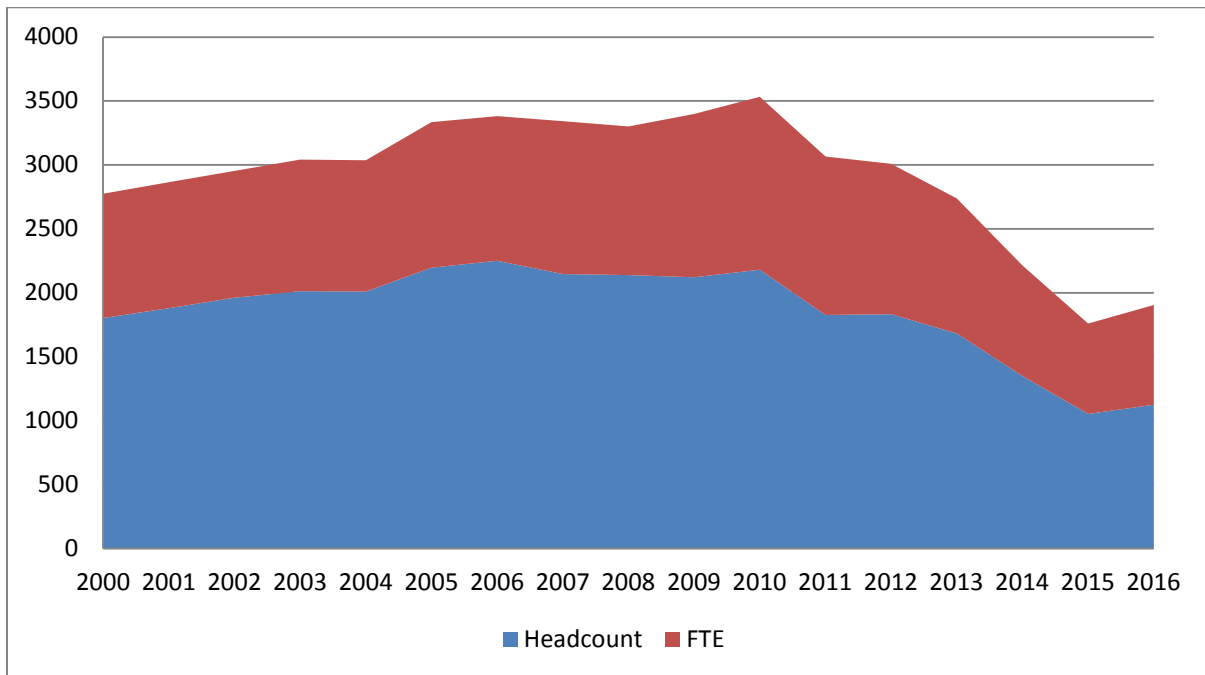
Credit Enrollment



	Credit Enrollment Fall 2016	
Credit Students	1125	Student Headcount
	11699	Student Credit Hours (SCH)
	779.9	Full-Time Equivalent (FTE) Students
	59%	Female Students
	41%	Male Students
	9.0%	Native American
	69.2%	Hispanic
	10.9%	White
	2.4%	Black
	8.5%	Other
	55%	Full-Time Students (12 or more credit hours)
	45%	Part-Time Students (less than 12 credit hours)
	54%	Students with Academic Majors
	23%	Students with Career Technical Majors
	23%	Students Undecided (includes Dual Credit)
	691	Eligible Students Receiving Financial Aid
	10:1	Student/Faculty Ratio
11.8 (Lower Division) 8.5 (Upper Division)	Average Class Size	
76	Web-Based/Hybrid Distance Ed. Classes (Fall 2016)	
331	Traditional Classes (Fall 2016)	

Enrollment Trends

The headcount shown is the number of students at the end of the fall semester. The 2016 fall semester is only an estimate because this document was developed before the end of the semester. The full-time equivalent (FTE) is computed by taking the total number of credit hours that students are enrolled in during the semester and dividing by 15.

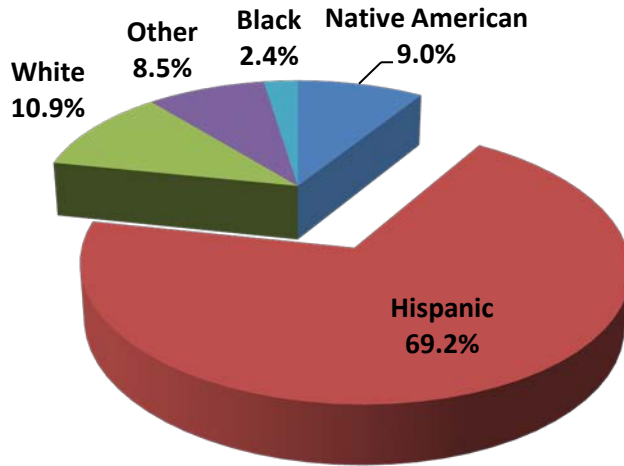


Fact	
Cumulative Fall Headcount Growth Since 2000	-678
Average Fall Headcount Growth Since 2000	-2%

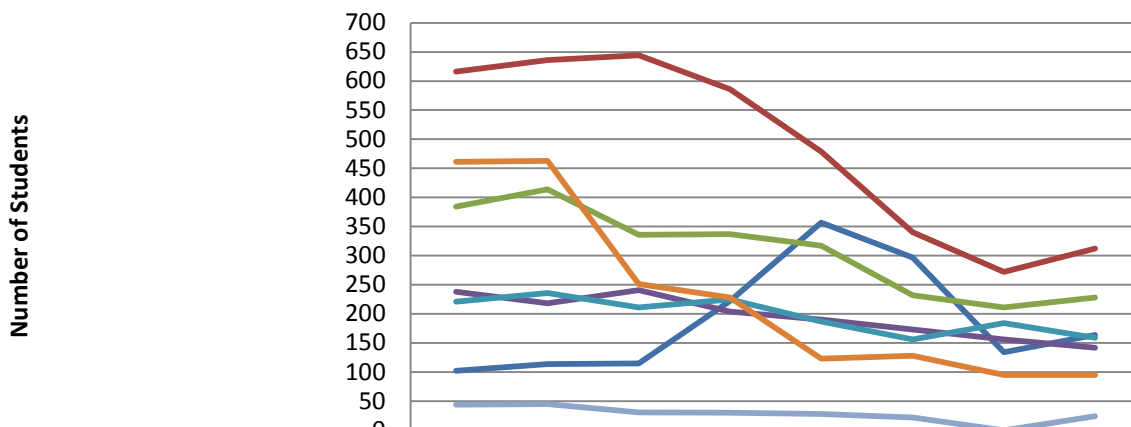
Characteristics of Students

Age	Fall 2016	Percent
18 or younger	135	12%
18 to 24	507	45%
25 to 30	156	14%
31 to 35	95	8%
36 to 40	60	5%
41 to 45	38	3%
46 to 50	30	3%
51 to 55	39	3%
56 to 64	37	3%
65 and older	27	2%

Ethnicity Distribution Fall 2016

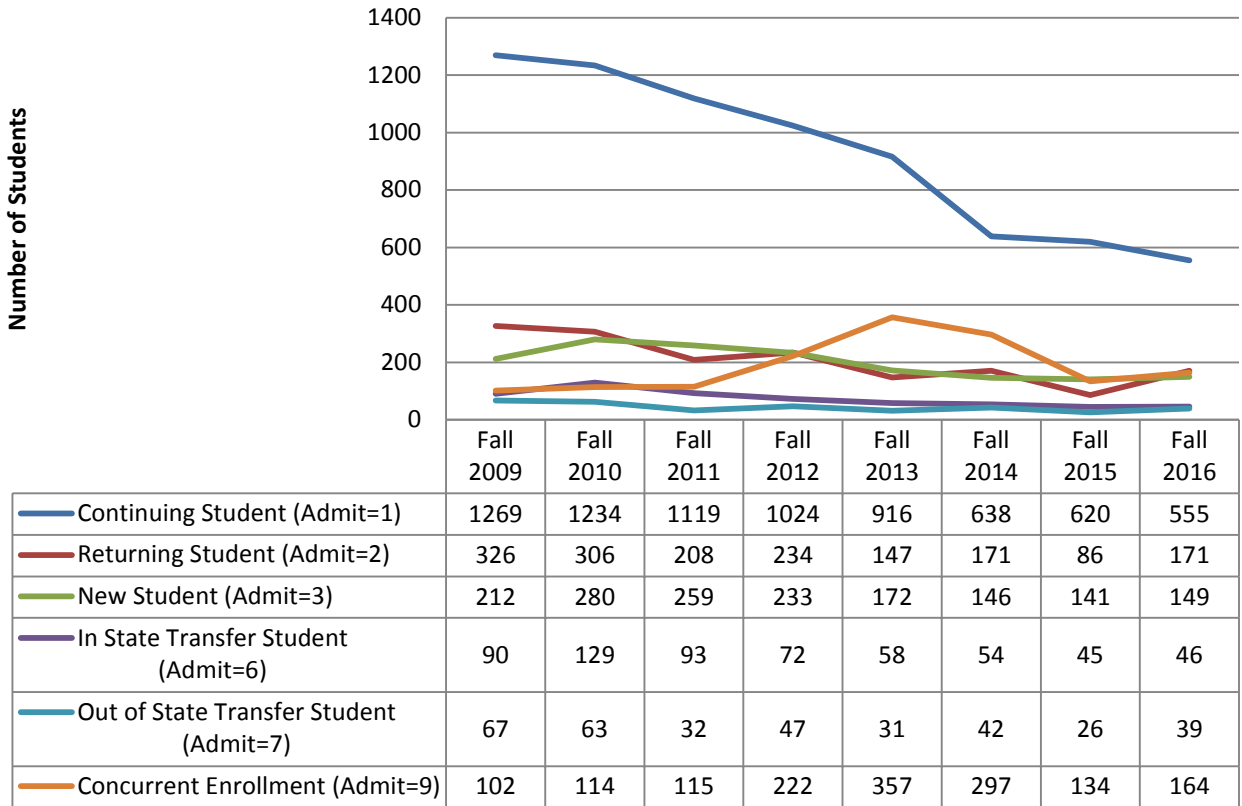


Student Class Distribution



	Fall 2009	Fall 2010	Fall 2011	Fall 2012	Fall 2013	Fall 2014	Fall 2015	Fall 2016
Concurrent or High School (Level=2)	102	114	115	222	357	297	134	164
Freshman (Level=11)	616	636	644	586	479	340	272	312
Sophomore (Level=12)	384	414	336	337	317	232	211	228
Junior (Level=13)	238	218	241	204	190	173	156	142
Senior (Level=14)	221	236	211	225	187	156	184	159
Non Degree (Level=16)	461	463	251	228	123	128	95	95
Post baccalaureate Certificate (Level=17)	44	45	31	30	28	22	0	24

Student Admission Type



Residency

Student Residence	Fall 2013	Fall 2014	Fall 2015	Fall 2016
Arizona	3	4	3	4
California	6	13	2	5
Colorado	2	1	0	1
Indiana	1	1	0	0
New Mexico	1645	1304	1034	1091
Oregon	1	2	1	0
South Dakota	1	0	0	0
Texas	10	7	4	9
Utah	3	4	1	0
Other	9	12	7	14

NM Residents	Fall 2012	Fall 2013	Fall 2014	Fall 2015	Fall 2016
Bernalillo	31	39	21	24	20
Colfax	1	1	3	1	0
Dona Ana	2	3	3	4	6
Los Alamos	82	73	48	32	38
McKinley	4	7	2	3	2
Mora	6	1	1	0	1
Otero	2	1	1	0	0
Rio Arriba	1191	1101	888	669	708
San Juan	12	37	6	11	15
San Miguel	2	0	4	2	3
Sandoval	5	5	3	1	3
Santa Fe	325	273	204	177	196
Taos	120	88	110	102	88
Valencia	1	3	3	3	4
No Response/Other	7	13	51	5	7

High School Recruitment

High School where New Student Graduated From:

	Fall 2011	Fall 2012	Fall 2013	Fall 2014	Fall 2015	Fall 2016
Capital High	1	3	3	1	0	1
Coronado HS	9	1	4	2	1	0
Cuba	3	0	0	0	5	0
Escalante	3	0	2	3	1	1
EVHS	84	90	36	51	39	30
GED	47	32	34	29	29	44
Los Alamos	6	6	5	2	5	3
McCurdy HS	9	2	3	2	7	8
Mesa Vista	4	11	3	6	5	4
Other NM HS	17	21	25	17	15	20
Out of Country/Unknown	4	5	2	2	2	3
Out of State	13	13	9	4	8	5
Penasco	7	6	8	6	10	5
Pojoaque	36	23	25	15	5	17
Santa Fe High School	7	7	4	1	1	2
Santa Fe Indian School	4	9	6	2	6	4
Victory Faith Christian Academy	5	4	3	3	2	2
Total Number of New Students	259	233	172	146	141	149

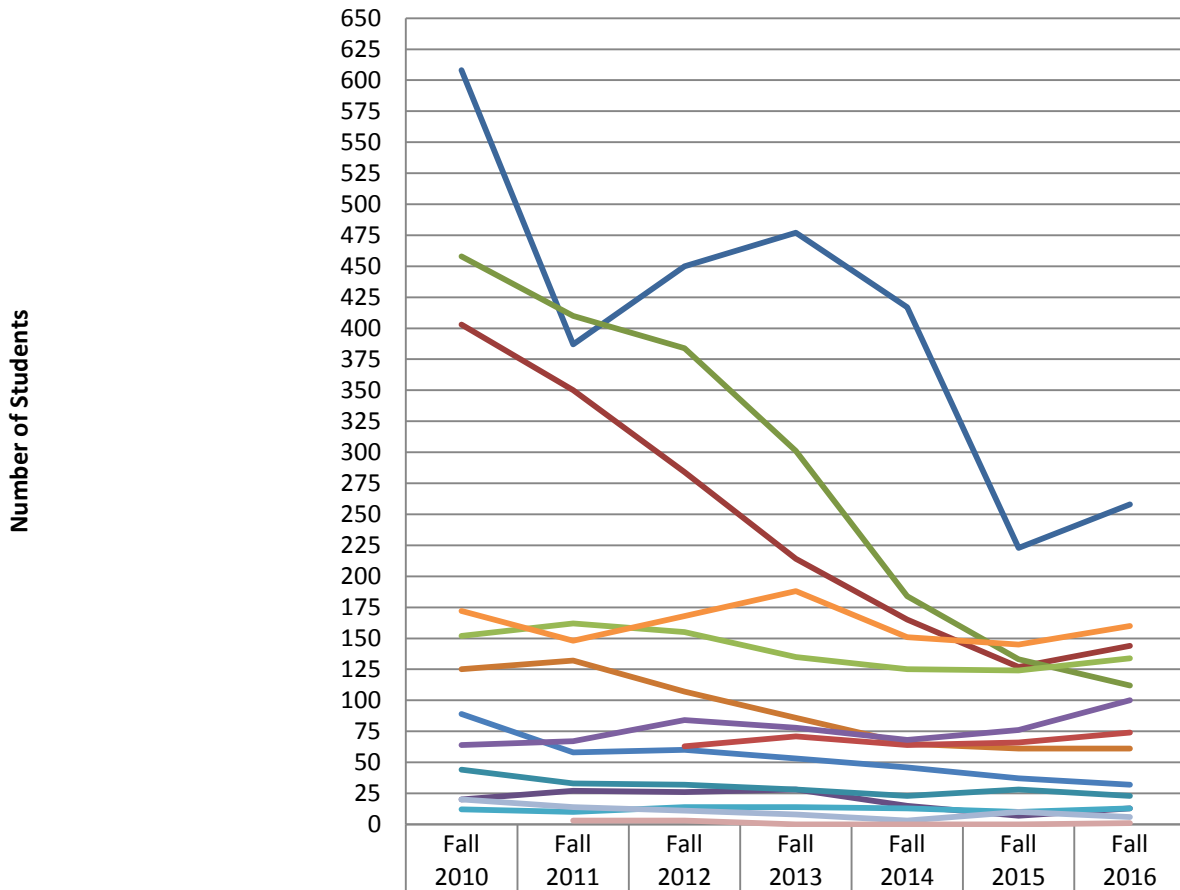
Degrees and Majors

Top 20 Majors Declared Fall Term

Major	2013	2014	2015	2016	Major	2013	2014	2015	2016
Non-Degree	477	417	251	258	Cosmetology/Barbering	50	34	38	26
Business Administration	145	124	116	128	Criminal Justice	35	33	19	32
Nursing (ADN) AS*	76	62	53	48	Mechanical Engineering	30	22	22	16
RN to BSN*	66	58	55	65	Accounting	24	29	26	21
Psychology	55	54	51	45	Music	17	15	12	18
Info Engineering Tech	54	52	57	66	Alternative Licensure	28	22	27	23
Elementary Education	58	51	47	39	Project Management	1	1	6	15
Environmental Science	60	50	56	56	Early Childhood Education	23	19	14	21
Biology	57	45	38	44	Liberal Arts	4	21	25	38
					Electro Mechanical Engineering	0	0	5	25
Nursing (ADN)	54	34	26	39					

*These degrees contain students who intend to or are applying to these programs.

Student Declared Degrees



	Fall 2010	Fall 2011	Fall 2012	Fall 2013	Fall 2014	Fall 2015	Fall 2016
Non Degree	608	387	450	477	417	223	258
Associate of Arts	403	350	284	214	165	127	144
Associate of Applied Science	458	410	384	301	184	133	112
Associate of Engineering	20	27	26	28	15	7	13
Alternative Licensure	44	33	32	28	23	28	23
Associate of Science	125	132	107	86	65	61	61
Bachelor of Arts	89	58	60	53	46	37	32
Bachelor of Arts in Integrated Studies			63	71	64	66	74
Bachelor Business Administration	152	162	155	135	125	124	134
Bachelor of Engineering	64	67	84	78	68	76	100
Bachelor of Music	12	10	14	14	13	10	13
Bachelor of Science	172	148	168	188	151	145	160
Certificate	20	14	11	8	3	10	6
Graduate Certificate		3	3	0	0	0	1